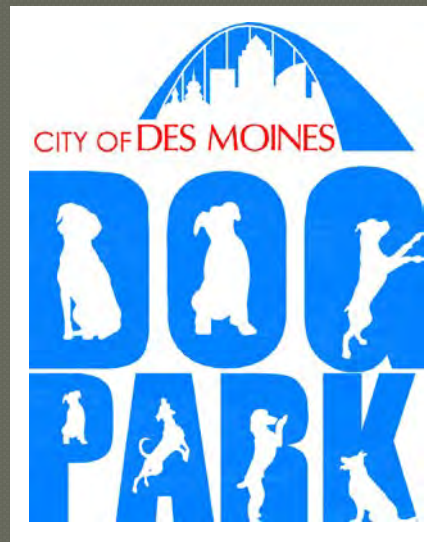

Downtown Dog Park

Informational Meeting

January 30, 2012



Des Moines Parks and Recreation

Ewing Dog Park



Downtown Dog Park



- Proposed Dog Park Site
- Des Moines Botanical & Environmental Center
- Iowa Events Center
- Center Street Bridge

Site Details



Proposed Dog Park Site

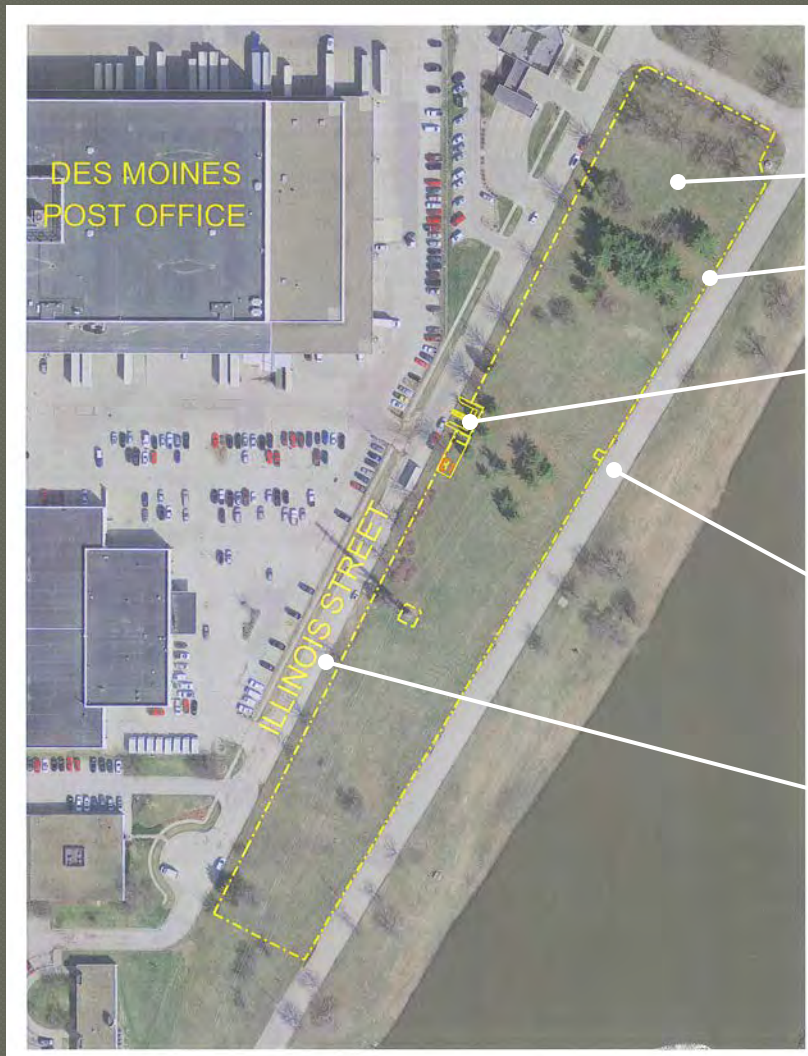
- Vehicle access provided by Illinois Street which runs along the western edge of the proposed dog park
- Postal trailers will be removed along Illinois Street, creating enough parking for 42 cars, similar to Ewing dog park
- The site has several large existing trees to provide shade, and water is available from a water main running along the north side of University Avenue.
- With the development of the Principal Riverwalk just to the south, the site will have easy pedestrian access allowing downtown residents to walk to the dog park, reducing the need and expense of an additional parking lot

Trail Connections



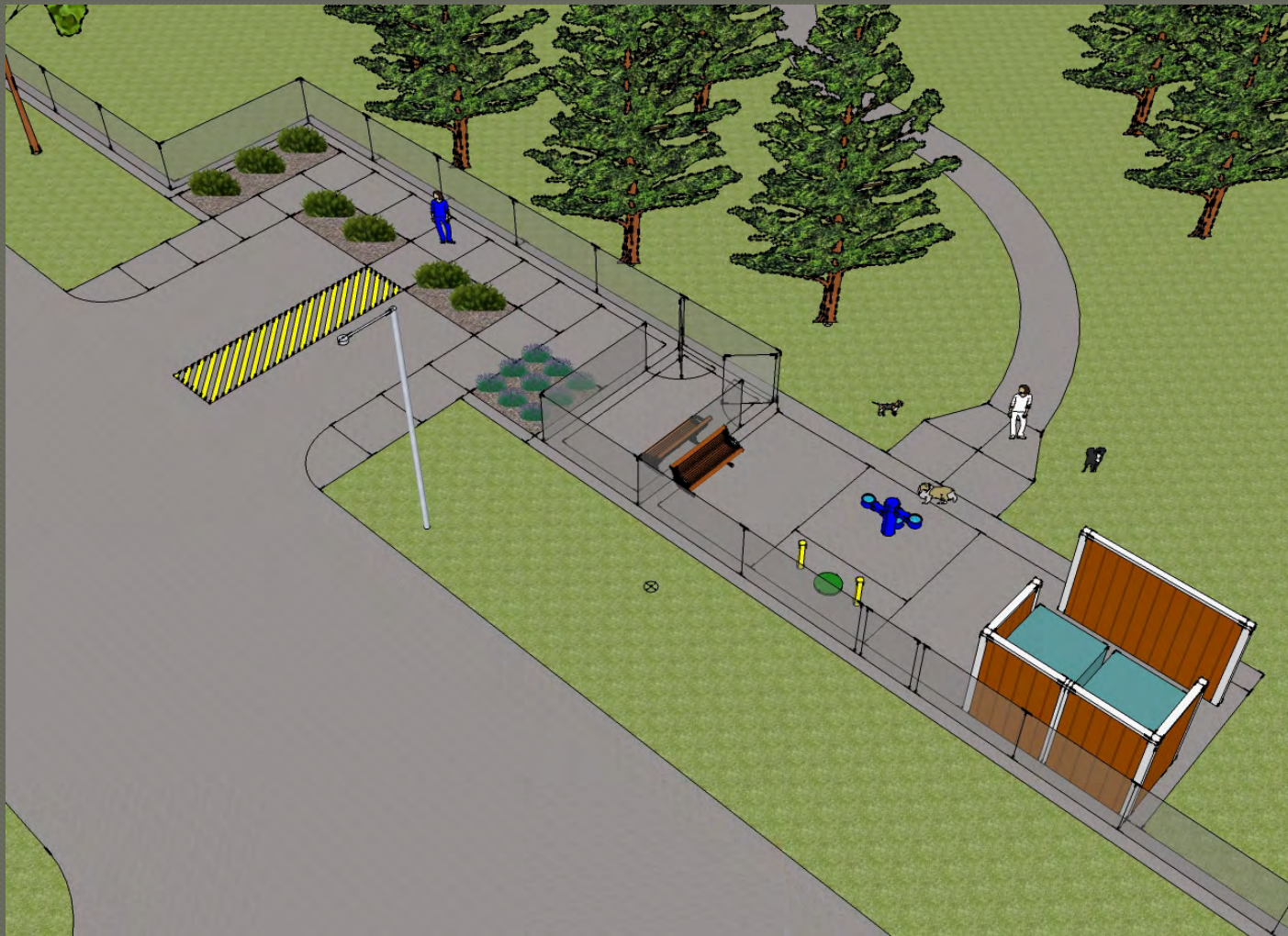
- Neal Smith Trail
- Central Place Levee Trail
- Proposed Dog Park
- West River Drive
- John Pat Dorrian Trail
- Center Street Bridge
- Principal Riverwalk

Phase I Improvements



- All Dog Area – 4 Acres
- 5' ht. Architectural Fence
- West Dog Park Entrance
 - 2 ADA Parking Stalls
 - Fenced Unleashing Area
 - Dog Waste Station
 - Portable Restroom Enclosure with ADA Accessible Kybo
- East Dog Park Entrance
 - Fenced Unleashing Area
- On Street Parking
 - 42 Stalls
- Funding is currently available for these improvements

West Dog Park Entrance



Here is a conceptual view of the west entrance with the 2 handicap accessible parking stalls, the fenced unleashing area, the dog waste disposal station, and the portable restroom enclosure

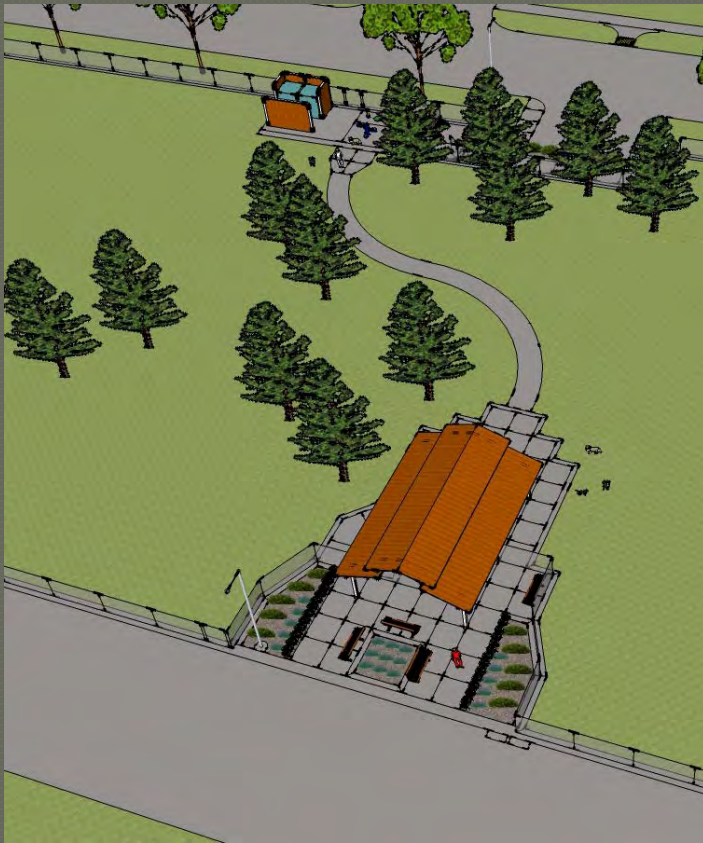
Note: The seating area, drinking fountain, and sidewalk connection shown are part of phase 2 improvements

Phase 2 Improvements



- Street Closure
 - Pedestrian Access Only
- West Dog Park Entrance
 - Drinking Fountain
 - Seating Area
 - Sidewalk Connection to the East Dog Park Entrance
- East Dog Park Entrance
 - 24'x34' Open Air Shelter
 - Fenced Unleashing Area
 - Seating Area
 - Landscaping
- These future improvements are not currently funded

East Dog Park Entrance



Here are a couple of conceptual views of what the enhanced east entrance with its open air shelter, seating areas, and landscaping might look like

Public Input

Proposed Downtown Dog Park



- Location
- Size
- Separate Small Dog Area
- Drinking Fountain
- Site Amenities
- Other

Next Steps

- Compile Survey Results March 2012
 - Survey available at:
www.dmparks.org/dogparks
- Complete Final Plans March 2012
- Construction Begins May 2012
- Dog Park Open Mid Summer 2012

Thank You

