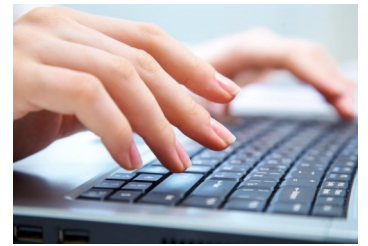


## A Public Service Message about trees from City of Des Moines

**How Many ‘Private’ Ash Trees are in Des Moines?** The City of Des Moines recently assessed the number of private ash trees our residents will need to manage. We’ve engaged in two kinds of survey. First, we asked you to tell us online, by write-in, or by telephone, if you have ash trees. Second, the Forestry Division welcomed the contribution of two externs from the Iowa Governor’s STEM Council program this summer. In June and July these two science teachers performed random sampling all across the city, looking between buildings and peering over rooftops to see how many ash trees they could see on private property. A detailed report can be found on the Forestry pages at [www.dmgov.org](http://www.dmgov.org) or by googling desmoinesforestry.

**Citizen Ash Tree Survey:** The online, mail-in and telephone data received to date reveals that 400 Des Moines residents submitted survey info. Of those, 299 reported that they had one or more ash trees totaling 590 ash trees. The survey will remain open through September, so there’s still time for you to register your ash tree count. You may take the survey online at [eab.dmgov.org](http://eab.dmgov.org) or call 283-4950.

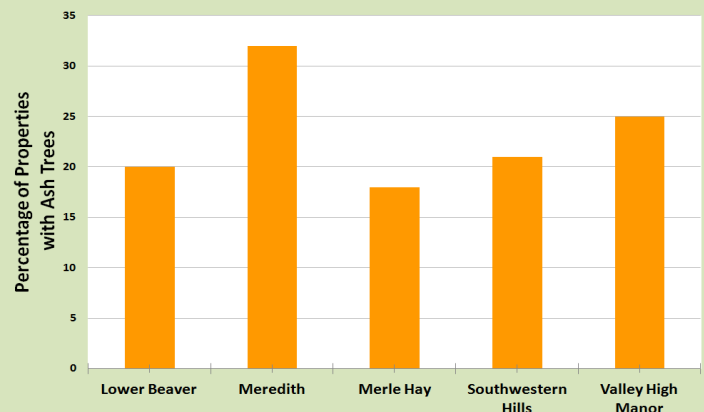


### Summer Extern Private Ash Survey:

Using the data collected by STEM externs we estimate that 12.4% of all properties in Des Moines have one or more ash trees, resulting in an estimated 13,000 private ash trees. We further estimate that all the activities related to EAB treatment and tree removal will cost our citizens \$13.5 million, an average of \$1050 per household with a single ash tree. Whether residents plan to treat and/or remove their ash trees, the increased volume of work will create stresses and contractor backlogs in the local marketplace. We continue to urge our residents to manage their ash trees as soon as possible, before wait lists get too long and standing dead ash trees become hazards.

### Sample of Summer Extern Survey Results

Five Neighborhoods with the Highest Percentage of Properties with Ash Trees



To see more results, check our Forestry pages at [www.dmgov.org](http://www.dmgov.org) or by searching for desmoinesforestry



### Hiring a Qualified Tree Contractor

When hiring a tree contractor, these three things are essential for your safety and protection.

- 1) Insurance
- 2) State Contractor’s License  
<http://www2.iwd.state.ia.us/contractor.nsf>
- 3) Certified Arborist(s)  
<http://www.isa-arbor.com/findanarborist/verify.aspx>

## A Public Service Message about trees from City of Des Moines

### Tree Inventory Coming Soon

#### What is a tree inventory?

A tree inventory is the gathering of accurate information on the health and diversity of the community forest. How many street trees are there? What kind? In what condition are they? You cannot manage the community forest effectively unless you know its condition. Tree inventories are an essential tool of good management.

#### Why is a tree inventory good for Des Moines?

There are many good reasons for conducting a tree inventory in our community. The inventory may be used to:



- Understand the species distribution of our urban forest
- Determine the overall health of our public trees
- Determine the quantity and location of vacant tree planting sites
- Quantify the dollar value of our community's urban forest
- Communicate the importance of a strong city forestry program
- Prioritize maintenance schedules in order to reduce the potential liability that results from hazardous trees
- Streamline the efficiency of forestry crews
- Facilitate long-term budgeting for urban forestry
- Educate residents about the benefits of a well-managed, healthy community forest, and inform them about species best suited to the community
- Provide the basis for the development of a comprehensive community forestry management plan

**Our non-profit partners continue to make an impact!** Both of our non-profit partners, Tree Des Moines and Trees Forever, continually raise awareness of the benefits of planting and caring for city trees.

#### Tree Des Moines (TDM) ~ News update

TDM recently received a \$50,000 grant from the Fish and Wildlife Foundation funded by Wells Fargo. The funds are approved for the following uses: To secure a data-driven tree risk assessment for the City of Des Moines, and to create a volunteer *DM Metro Tree Steward* Education Program to plant and care for newly planted trees. Watch for a media news release announcing the kick off of the tree assessment in early September. If you would like more information on either of these projects, or, would like to support Tree Des Moines, please contact [CStephens@TreeDesMoines.com](mailto:CStephens@TreeDesMoines.com).

#### Trees Forever ~ Every Tree Needs a Leader

Join nearly 140 TreeKeeper volunteers who help to make Des Moines a greener place to live. Through a partnership between the City of Des Moines and Trees Forever, TreeKeeper volunteers attend a nine hour training session and engage in hands-on service in the community by planting, pruning, and advocating for trees. Training topics range from the benefits of trees, urban tree stressors, tree ID, general tree care, and more. You can be part of this hard-working, fun-loving, tree-hugging group! Contact Leslie Berckes, Trees Forever Program Manager, at [LBerckes@treesforever.org](mailto:LBerckes@treesforever.org) or 515-681-2295 to find out more about upcoming TreeKeeper classes and tree care events.

